



Information colorectal cancer screening

- 1 You will receive an invitation for an examination.



- 2 This is an examination of your stool.
This is called a stool test.



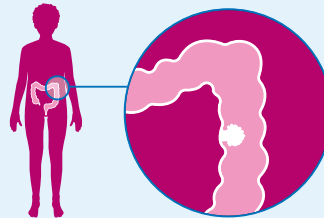
- 3 Here it says how the test works.



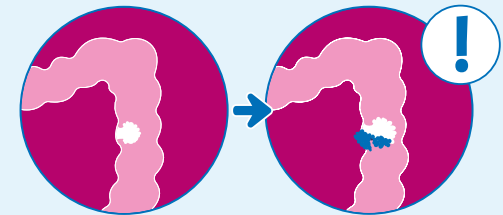
- 4 Why is this test important?



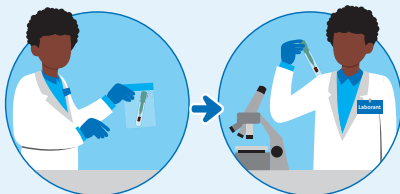
- 5 Polyps can develop in the intestines.
A polyp is a benign lump.



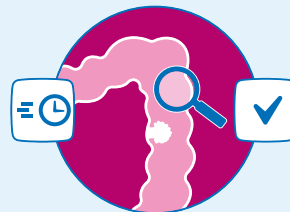
- 6 Sometimes a polyp grows and changes into cancer.
People usually do not notice this.



- 7 When blood is found in the stool, an internal exam
(colonoscopy) of the large intestine will follow.
A polyp or cancer may be found.



- 8 If found in time, it can usually be treated well.



- 9 Would you like to participate?
Then take the stool test and hand it in.

